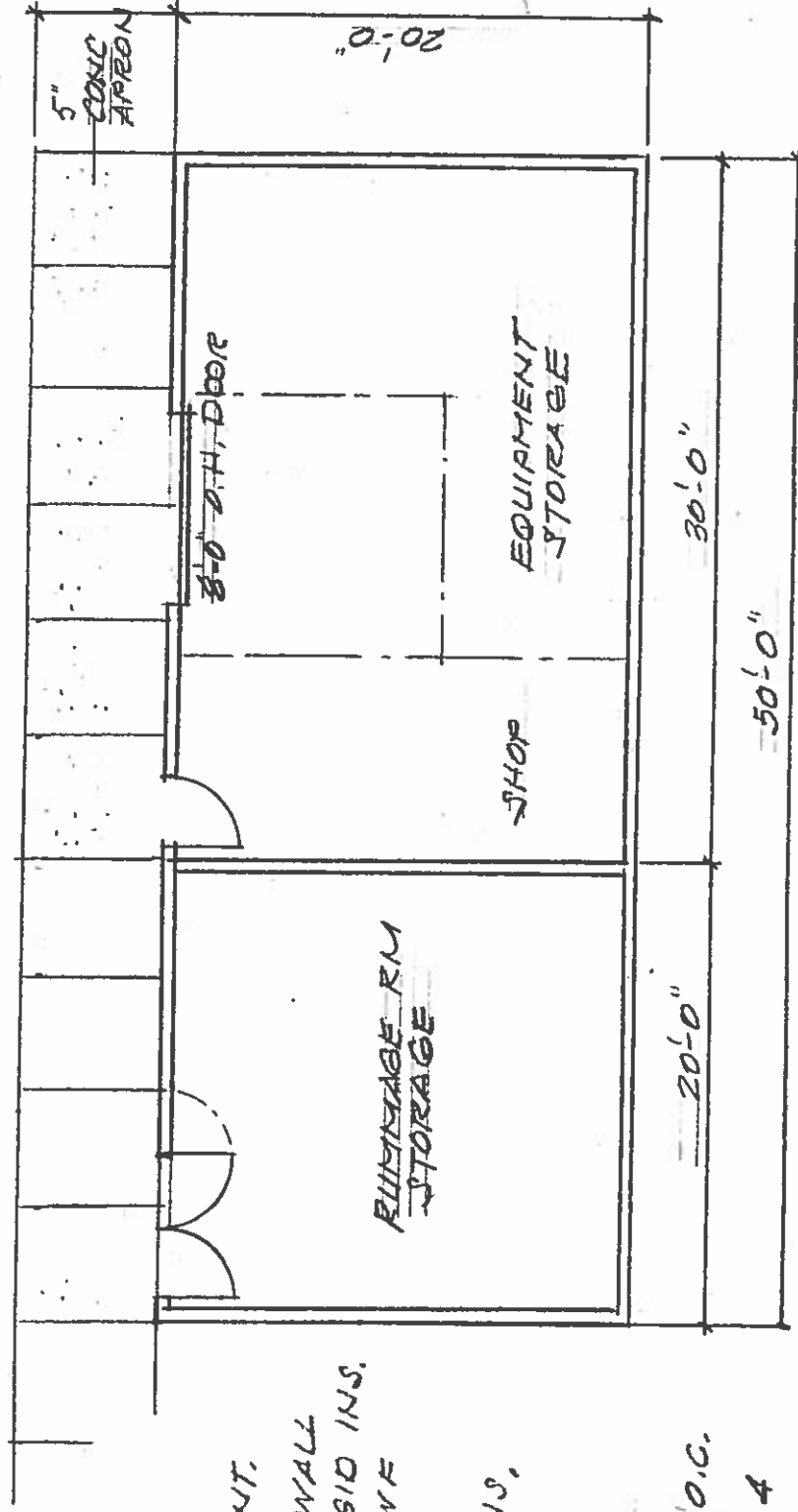


NORTH ELEVATION
1/8" = 1'-0"

WEST ELEVATION
1/8" = 1'-0"



FLOOR PLAN - MAINTENANCE BUILDING
1/8" = 1'-0"



- FOOTING - 8" x 16" CONCRETE W/ 2-#5 CONT.
- FOUNDATION WALL - 8 CONCRETE BLOCK WALL
5 BLOCKS HIGH 2" RIGID INS.
- FLOOR - 5" CONCRETE SLAB W/ 6x6 10% WWF
ON 6 MIL. VAPOR BARRIER.
- WALLS - 2x6 16" O.C. 1/2" OSB BO. R-19 INS.
1/2" GYP BO. DIVIDING WALL
5/8" FIRECODE BOTH SIDES.
- CEILING - 5/8" FIRECODE R40 INSULATION
- ROOF FRAMING - WOOD TRUSSES 24" O.C.
- ROOFING - ASPHALT SHINGLES CLASS 4
ON WEATHER SHIELD
- SIDING - PREFINISHED CEMENT BO
PREFINISHED TRIM.
- ELECTRICAL
- HEAT & AC WALL UNIT EQUIPMENT STORAGE